

Drain: CROSSFIELDS DRAIN **Drain #:** 230
Improvement/Arm: CROSSFIELDS DRAIN-SECTION 1
Operator: JDH **Date:** 12-9-03
Drain Classification: Urban/Rural **Year Installed:** 1988

GIS Drain Input Checklist

- Pull Source Documents for Scanning JJA 12-9
- Digitize & Attribute Tile Drains N/A
- Digitize & Attribute Storm Drains JJA 12-10
- Digitize & Attribute SSD JJA 12-10
- Digitize & Attribute Open Ditch N/A
- Stamp Plans JJA 12-10
- Sum drain lengths & Validate JJA 12-10
- Enter Improvements into Posse JJA 12-10
- Enter Drain Age into Posse JJA 12-23
- Sum drain length for Watershed in Posse JJA 12-23
- Check Database entries for errors JJA 12-10

Gasb 34 Footages for Historical Cost
Drain Length Log

Drain-Improvement: CROSSFIELDS DRAIN - CROSSFIELDS - SECTION 1

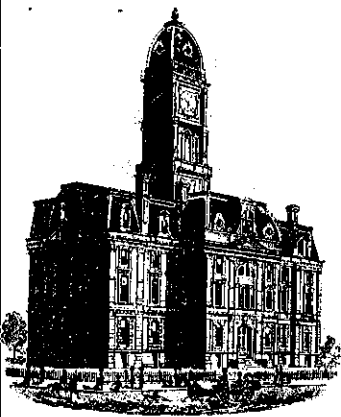
Drain Type:	Size:	Length <small>Surveyed</small> (Range)	Length (DB Query)	Length Reconcile	If Applicable:	
					Price:	Cost:
SSD	6"	9500	14112	+14612'		
RCP	12"	940'	875'	-65'		
	15"	1288'	1288'	∅		
	18"	3091'	3395'	+304'		
	21"	1000'	1000	∅		
	24"	5566'	5566	∅		
	27"	1372'	1372'	∅		
	33"	313'	313'	∅		
	36"	225'	225'	∅		
	42"	326'	326'	∅		

Sum: 23621' 25472' +1851' _____

Final Report: _____

Comments:

SURVEY REPORT HAS INCORRECT LENGTHS FOR 6" SSD, 12" AND 18" PIPE.



SURVEYOR'S OFFICE

Hamilton County

Kenton C. Ward, Surveyor

779-6110 Ext. 19
776-9626

Noblesville, Ind. 46060 April 10, 1988

TO: Hamilton County Drainage Board

RE: Crossfield Drain, Section 1

Attached is a petition, mon-enforcement request, plans, calculations, estimate and assessment roll for Crossfield Drain, Section 1.

I have reviewed the submittals and petition and have found each to be in proper form.

I have made a personal inspection of the land described in the petition. Upon doing so, I believe that the drain is practicable; will improve the public health; benefit a public highway and be of public utility; and that the costs, damages and expenses of the proposed drain will probably be less than the benefits accruing to the owners of land likely to be benefitted. The drain will consist of the following:

6"	SSD	9500 L.F.	24"	RCP	5479 L.F.
12"	RCP	953 L.F.	27"	RCP	1372 L.F.
15"	RCP	1288 L.F.	33"	RCP	313 L.F.
18"	RCP	3217 L.F.	36"	RCP	225 L.F.
21"	RCP	1063 L.F.	42"	RCP	326 L.F.

The total length of the drain will be 23,736 feet.

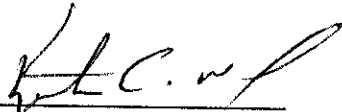
Although the 24" offsite storm sewer will be included as part of the regulated drain, the properties it will be installed on will not be assessed because the line will not benefit the property. This line is only to provide an outlet for the retention lake.

I have reviewed the plans and believe the drain will benefit each lot equally. Therefore, I recommend each lot be assessed equally. I recommend ~~maintenance~~ assessment of \$35.00 per lot and \$3.00 per acre for roadways. With is assessment the total annual assessment for the drain/this section will be \$1853.89.

The responsibility for lake maintenance shall be the Home Owners Association. The regulated drain shall begin and end at the lake outlets and inlets.

I recommend a hearing be set for July 1988.

KCW/no



Kenton C. Ward
Hamilton County Surveyor

Crossfields

MERCHANTS NATIONAL BANK & TRUST COMPANY

TELEX 27-411
TELEPHONE (317) 267-7751

A MERCHANTS NATIONAL COMPANY
WORLD BANKING DEPARTMENT
One Merchants Plaza, Suite 770 South
Indianapolis, Indiana 46255

S.W.I.F.T. ADDRESS — MNBIUS34
CABLE ADDRESS — FRENZEL

STANDBY LETTER OF CREDIT AMENDMENT

Irrevocable Letter of Credit No.: 43162
Issue Date: March 18, 1988
Amendment No.: 1

Date: December 1, 1988

BENEFICIARY
CITY OF CARMEL AND HAMILTON COUNTY
COMMISSIONERS

FOR ACCOUNT OF
ROBERT N. SKINNER AND AVIS H. SKINNER
8900 Keystone Crossing, Suite 657
Indianapolis, IN 46240

AMOUNT: USD73,000.00 (Seventy-Three Thousand and 00/100 U.S. Dollars).

EXTERIOR DRAINAGE

In accordance with instructions received, the above mentioned Letter of Credit has been amended as follows:

1. Extend expiration date to February 28, 1989.

ALL OTHER TERMS AND CONDITIONS REMAIN UNCHANGED

Merchants National Bank & Trust Co.
of Indianapolis

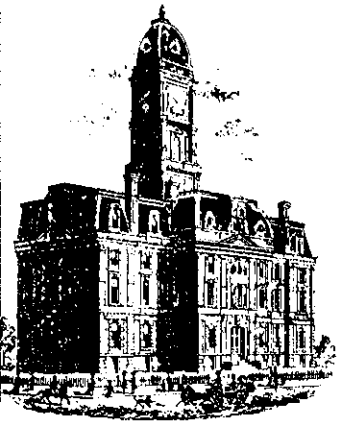
Vicki Chaloup
Letter of Credit Specialist II

FILED

DEC 21 1988

HAMILTON COUNTY DRAINAGE BOARD

SECRETARY



Kenton C. Ward, Surveyor

Phone (317) 776-8495

Fax (317) 776-9628

Suite 188

One Hamilton County Square

Noblesville, Indiana 46060-2230

Map Correction-Field Verification

Drain Number: # 230

Drain Length: OFFSITE = 2570

Drain Name: Crossfields Drain

Change +/-: No Change

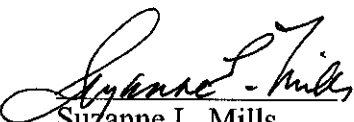
Date: 07-28-03

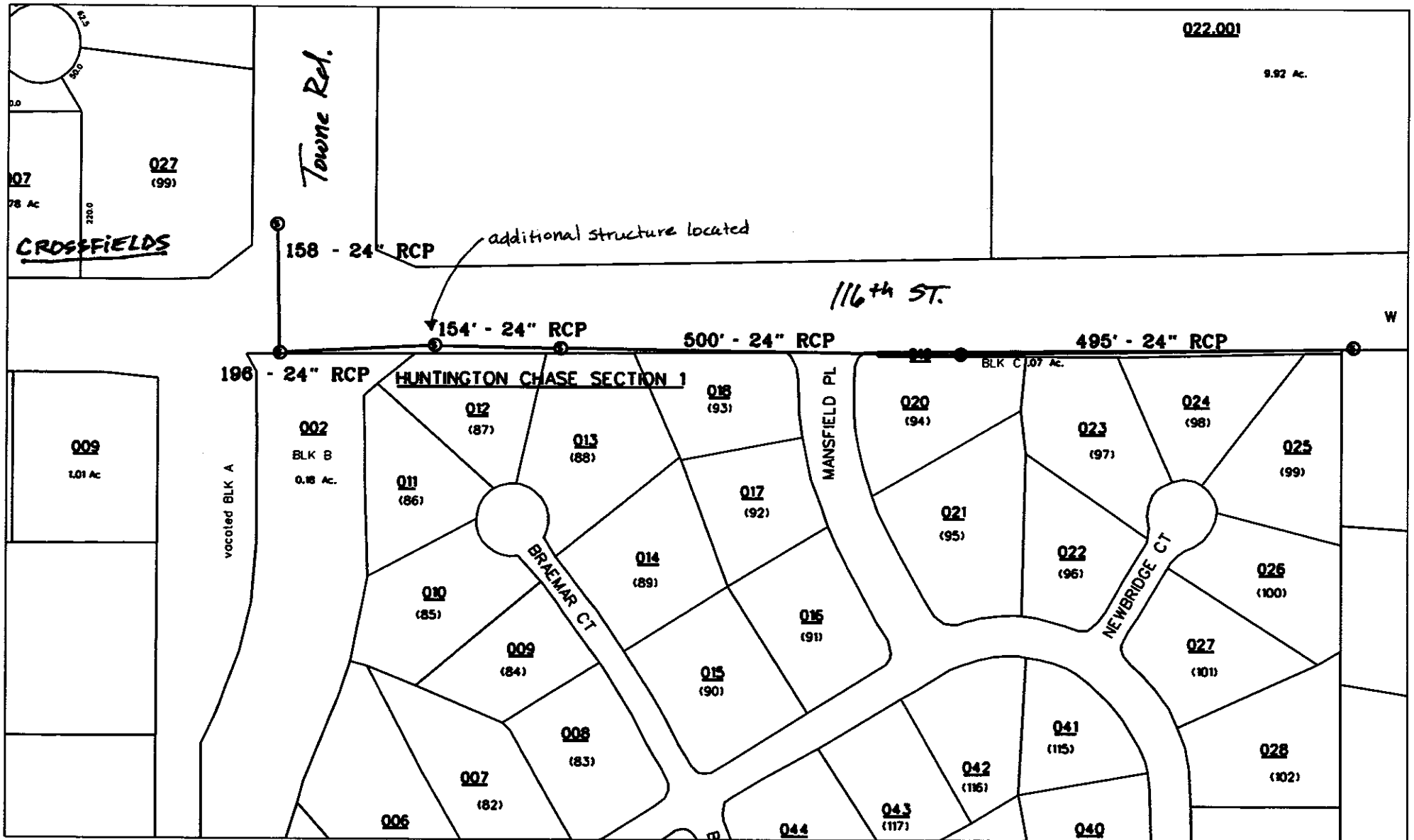
New Length: No Change

Verified By: Suzanne Mills ; Steve Britz

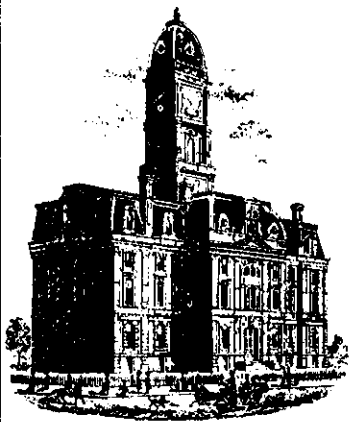
Notes & Sketch: See attached sketch.

The OFFSITE was field checked due to the intersection improvements at 116th ST and Towne Rd. The drain was not affected. However, an additional structure was located that was not shown on the original as built by Weihe Engineers (Job No 87-208). Therefore, there was no additional footage to be added to the drains length and all maps were corrected accordingly.


 Suzanne L. Mills
 GIS Specialist



reg_drain_hc.dgn 7/28/2003 3:04:50 PM



SURVEYOR'S OFFICE

Hamilton County

Kenton C. Ward, Surveyor

Phone (317) 776-8495

Fax (317) 776-9628

Suite 146

One Hamilton County Square

Noblesville, Indiana 46060-2230

October 11, 1996

To: Hamilton County Drainage Board

Re: **Crossfields Drain - section 1**

Attached are as-builts, certificate of completion & compliance, and other information for Crossfields section 1. An inspection of the drainage facilities for this section has been made and the facilities were found to be complete and acceptable.

During construction, changes were made to the drain which will alter the plans submitted with my report for this drain dated April 10, 1988. The changes are as follows:

- ✓ Str 38-39 consists of 21" RCP which was shortened from 426 feet to 400 feet.
- ✓ Str 47-49 consists of 21" RCP which was reported at 63 feet in length. The correct length is 26 feet.
- ✓ Str 28-27 consists of 24" RCP which was lengthened from 23 feet to 24 feet.
The 24" RCP offsite line was lengthened from 2380 feet to 2412 feet.
The 24" RCP outflow line was lengthened from 1837 feet to 1891 feet.
The corrected total of 18" RCP is 3091 feet.
- ✓ Existing Manhole - str 15 consists of 12" RCP which was lengthened from 39 feet to 40 feet.
- ✓ Str 34-35 consists of 12" RCP which was lengthened from 51 feet to 55 feet.
- ✓ Str 58-20 consists of 12" RCP which was lengthened from 271 feet to 293 feet.
- ✓ Str 20-22 consists of 12" RCP which was shortened from 95 feet to 55 feet.

The length of the drain due to the changes described above is now **23,624** feet.

Note: the normal pool elevation of the retention pond was altered by 3 feet. This change was due to a request by the developer and reported verbally to the board on January 16, 1990 and reflected in the minutes in book 2 page 407. The calculations were those provided by Weihe Engineers included with their letter

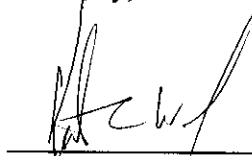
dated September 15, 1989. Based on their calculations this would make the normal pool elevation of the pond 884.68.

The non-enforcement was approved by the Board at its meeting on March 14, 1994.

The bond or letter of credit from Merchants National Bank & Trust Co, number 43162 for Offsite drainage, dated December 1, 1988, in the amount of \$73,000, has been recommended for release in a letter to the Commissioners dated March 23, 1989. The bond or letter of credit from Merchants National Bank & Trust Co, number 43161 for interior drainage, dated December 1, 1988, in the amount of \$85,490, has expired.

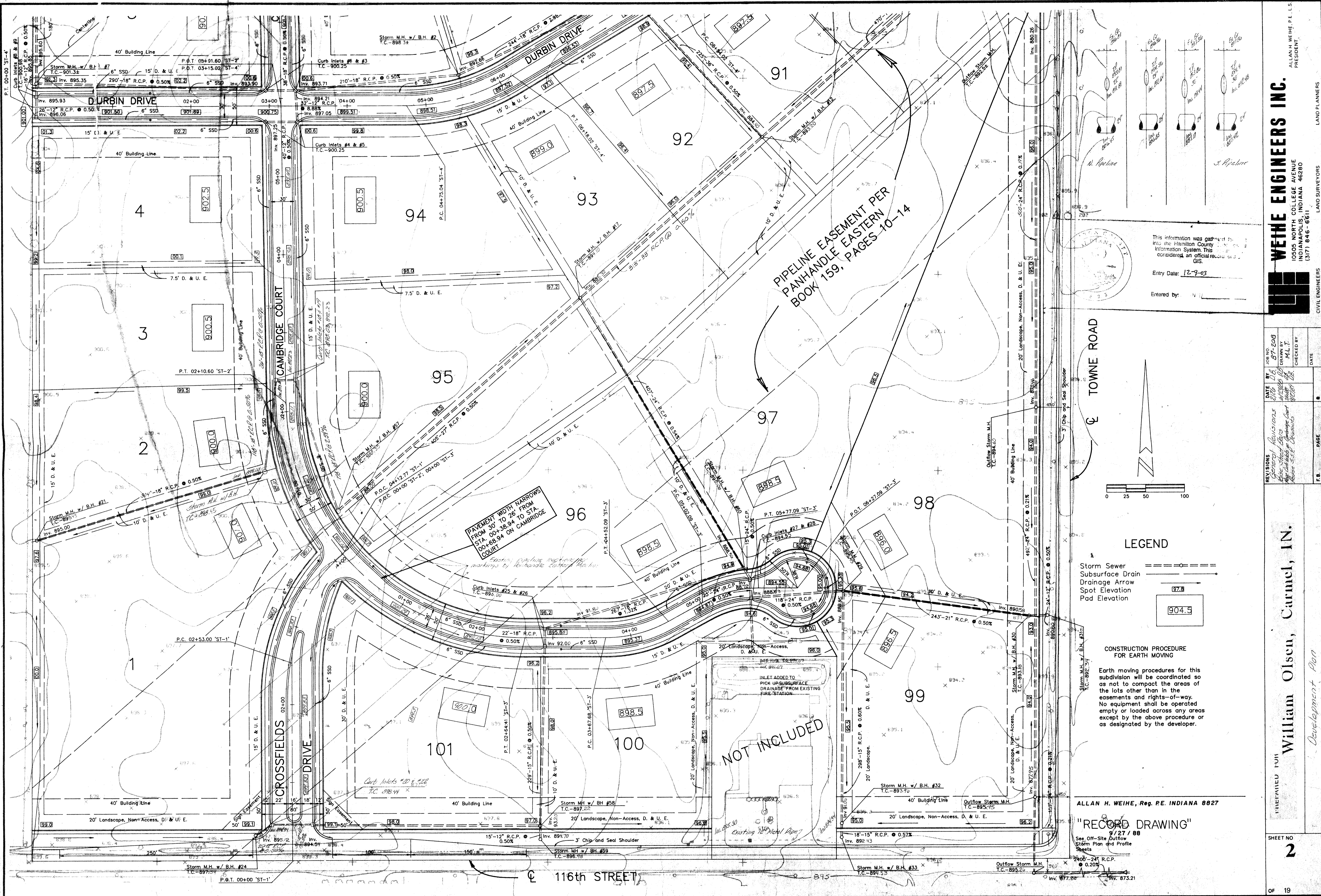
I recommend the Board approve the drains construction as complete and acceptable.

Sincerely,



Kenton C. Ward,
Hamilton County Surveyor

KCW/slm



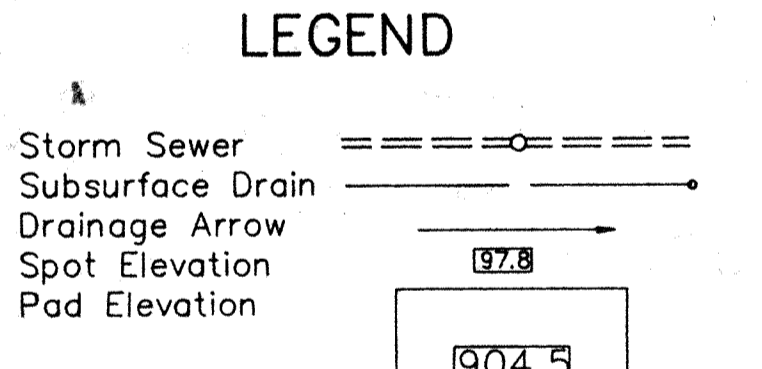
PIPELINE EASEMENT PER
PANHANDLE EASTERN
BOOK 159, PAGES 10-14

PAVEMENT WIDTH NARROWS
FROM 30' TO 25' FROM
STA. 00+38.94 TO STA.
00+68.94 ON CAMBRIDGE
COURT

NOT INCLUDED

TOWNE ROAD

116th STREET



CONSTRUCTION PROCEDURE FOR EARTH MOVING

Earth moving procedures for this subdivision will be coordinated so as not to compact the areas of the lots other than in the easements and rights-of-way. No equipment shall be operated empty or loaded across any areas except by the above procedure or as designated by the developer.

ALLAN H. WEIHE, Reg. P.E. INDIANA 8827

"RECORD DRAWING"

9/27/88

See Off-Site Outflow Storm Plan and Profile Sheets

This information was gathered from the Hamilton County GIS and Information System. This is considered an official record of the GIS.

Entry Date: 12-9-83

Entered by: _____

WEIHE ENGINEERS INC.
10505 NORTH COLLEGE AVENUE
INDIANAPOLIS, INDIANA 46280
(317) 846-6611

LAND SURVEYORS
CIVIL ENGINEERS

DATE BY: 08/11/88 M.L.T.
DRAWN BY: M.L.T.
CHECKED BY: M.L.T.
DATE: _____

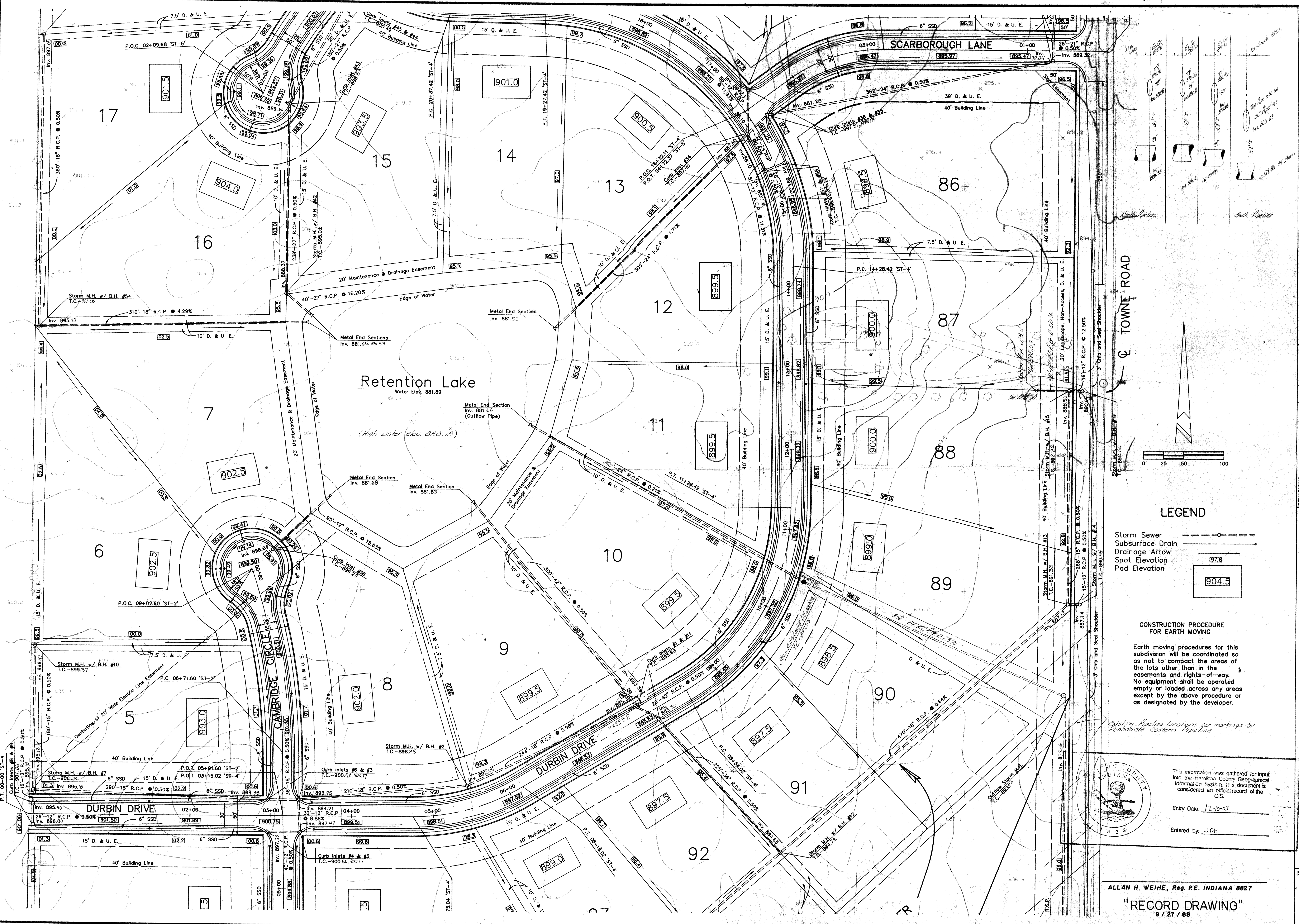
REVISIONS:
General Revisions
Site Plan
Site Plan
Site Plan
Site Plan
Site Plan

PREPARED FOR: **William Olsen, Carmel, IN.**
Development Plan

SHEET NO. **2**

OF 19

This copy printed from the Digital Archive of the Hamilton County Surveyor's Office, One Hamilton Co. Square, Ste. 188, Noblesville, IN 46060

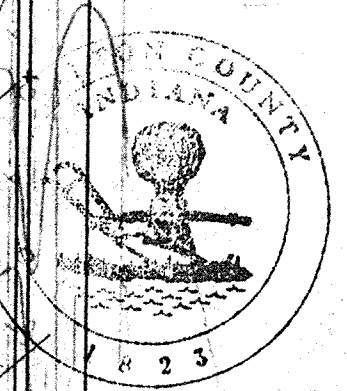


LEGEND

- Storm Sewer
- Subsurface Drain
- Drainage Arrow
- Spot Elevation
- Pad Elevation

CONSTRUCTION PROCEDURE FOR EARTH MOVING

Earth moving procedures for this subdivision will be coordinated so as not to compact the areas of the lots other than in the easements and rights-of-way. No equipment shall be operated empty or loaded across any areas except by the above procedure or as designated by the developer.



This information was gathered for input into the Hamilton County Geographical Information System. This document is considered an official record of the GIS.

Entry Date: 12-10-03

Entered by: J.O.H.

WEIHE ENGINEERS INC.
 10505 NORTH COLLEGE AVENUE
 INDIANAPOLIS, INDIANA 46280
 (317) 846-6611

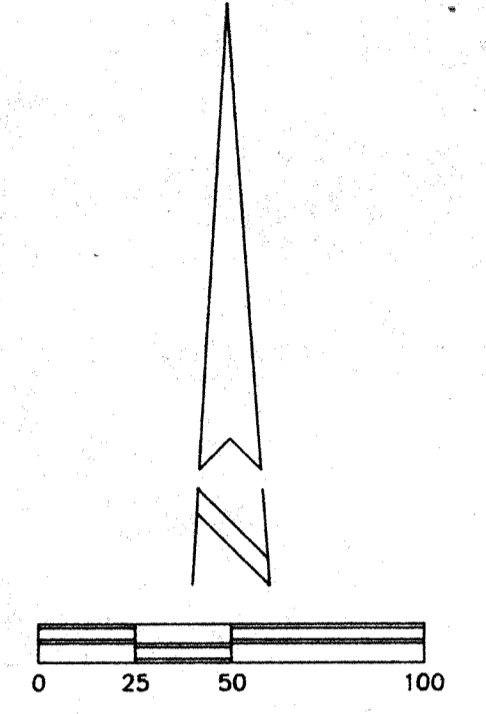
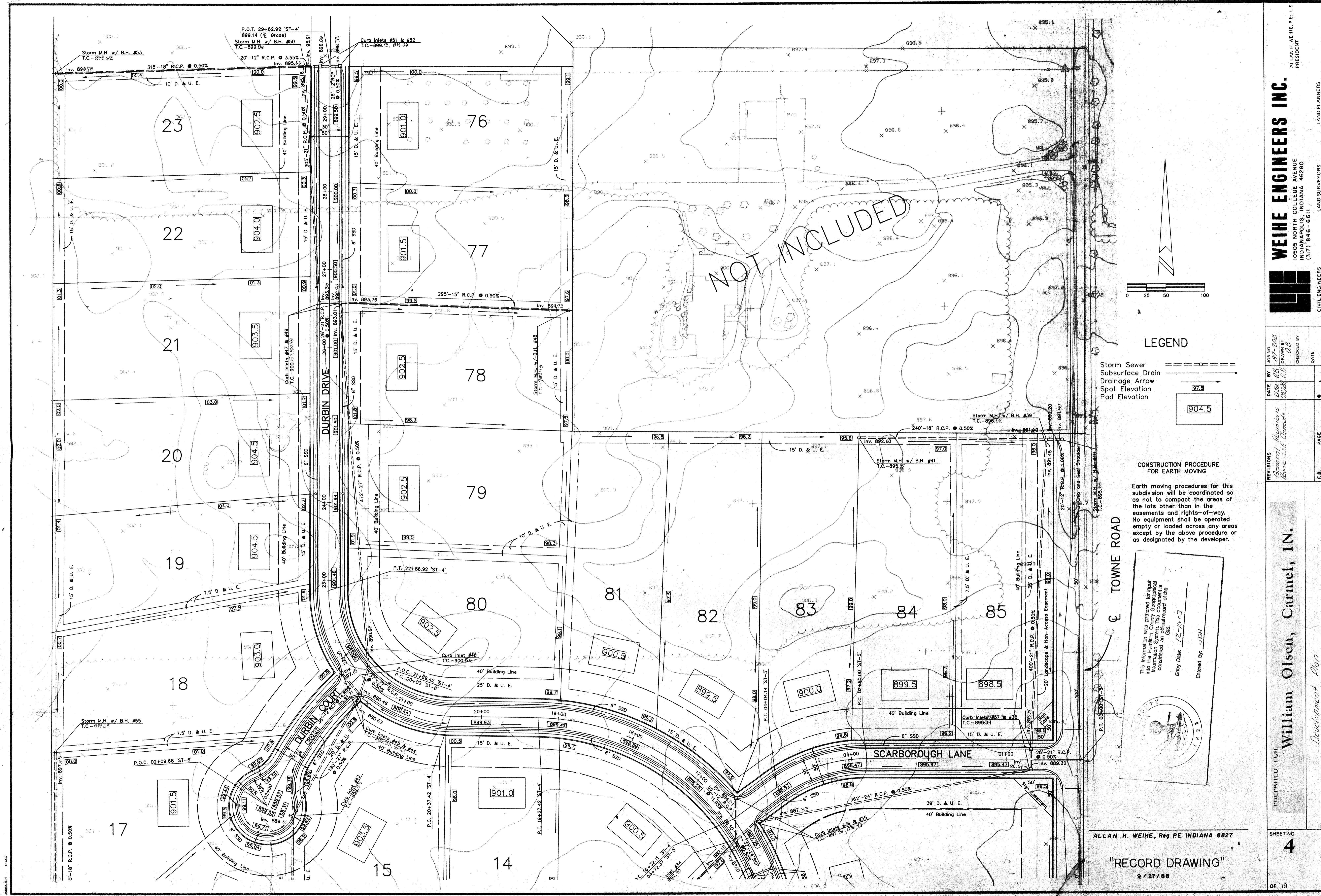
ALLAN H. WEIHE, P.E. L.S.
 PRESIDENT

CIVIL ENGINEERS
 LAND SURVEYORS
 LAND PLANNERS

REVISIONS	DATE	BY	JOB NO.	PAGE
General Revisions	12-10-03	J.O.H.	17-03-008	3
As shown on 12-10-03		J.O.H.		
As shown on 12-10-03		J.O.H.		
As shown on 12-10-03		J.O.H.		

William Olsen, Carmel, IN.
Development Plan

This copy printed from the Digital Archive of the Hamilton County Surveyor's Office, One Hamilton Co. Square, Ste. 188, Noblesville, IN 46060



- LEGEND**
- Storm Sewer
 - Subsurface Drain
 - Drainage Arrow
 - Spot Elevation
 - Pad Elevation

CONSTRUCTION PROCEDURE FOR EARTH MOVING

Earth moving procedures for this subdivision will be coordinated so as not to compact the areas of the lots other than in the easements and rights-of-way. No equipment shall be operated empty or loaded across any areas except by the above procedure or as designated by the developer.

This information was gathered for input into the Hamilton County Geographical Information System. This information is considered an official record of the GIS.

Entry Date: 12-10-03
Entered by: JCH

WEIHE ENGINEERS INC.
10505 NORTH COLLEGE AVENUE
INDIANAPOLIS, INDIANA 46280
(317) 846-6611
LAND SURVEYORS
CIVIL ENGINEERS

DATE BY: 08/10/03 JCH
DRAWN BY: JCH
CHECKED BY: JCH
DATE: 08/10/03

REVISIONS:
General Revisions
Issue S.D. Changes
12/10/03

DATE: 08/10/03

PREPARED FOR: William Olsen, Carmel, IN.
Development Plan

SHEET NO: 4

OF 19

This copy printed from the Digital Archive of the Hamilton County Surveyor's Office, One Hamilton Co. Square, Ste. 188, Noblesville, IN 46060